

## Data Sheet

### CREBBP (KAT3A), GST-tag Recombinant

Human, recombinant, N-terminal GST-tag  
**Catalog #:** 31128  
**Lot #:** 130917-G2      **Conc.:** 2.52 mg/ml

**Formulated in:** 40 mM Tris pH 8.0, 110 mM NaCl, 2.2 mM KCl, 0.04% Tween-20 and 20% glycerol

**Stability:** At least 6 months at  $-80^{\circ}\text{C}$ . Avoid freeze/thaw cycles. Storing diluted protein is not recommended, if necessary, use carrier protein (BSA 0.1 – 0.5%).

**References:**

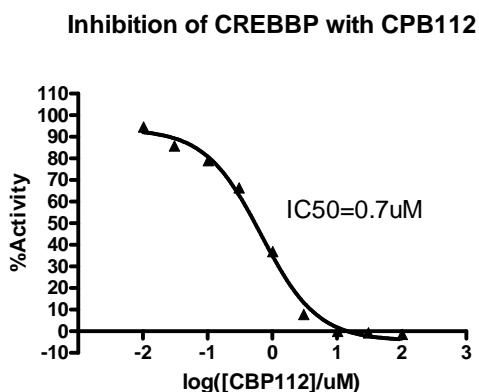
1. Panagopoulos, I., *et al.*, *Hum Mol Genet.* 2001 Feb 15; **10(4)**: 395-404.
2. Huang, W.C., *et al.*, *Mol Cell.* 2007 Apr 13; **26(1)**:75-87.

**Description:** Human bromodomain CREB binding protein (CREBBP), also known as CBP, RSTS and KAT3A, GenBank Accession No. NM\_004380, a.a. 1081-1197 corresponding to single bromodomain with N-terminal GST-tag, MW=41 kDa, expressed in an *E. coli* expression system.

**Assay Conditions:** Assay was performed using the BPS Bioscience CREBBP Inhibitor Screening Assay Kit (BPS Bioscience #32607) following the manufacturer's instructions and using varying concentrations of CPB112.

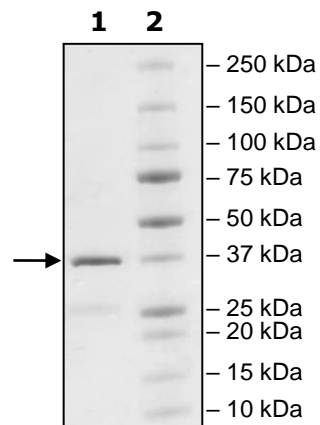
**Application:** Useful for the study of enzyme kinetics, screening inhibitors, and selectivity profiling.

## Quality Assurance



**4-20% SDS-PAGE  
 Coomassie staining**

**Lane 1:**  
 2 µg CREBBP  
**Lane 2:**  
 Protein Marker  
**MW:** 41 kDa  
**Purity:** ≥90%



OUR PRODUCTS ARE FOR RESEARCH USE ONLY. NOT FOR DIAGNOSTIC OR THERAPEUTIC USE.

To place your order, please contact us by Phone **1.858.829.3082** Fax **1.858.481.8694**  
 Or you can Email us at: [info@bpsbioscience.com](mailto:info@bpsbioscience.com)  
 Please visit our website at: [www.bpsbioscience.com](http://www.bpsbioscience.com)



6405 Mira Mesa Blvd, Ste 100  
San Diego, CA 92121  
**Tel:** 1.858.202.1401  
**Fax:** 1.858.481.8694  
**Email:** [info@bpsbioscience.com](mailto:info@bpsbioscience.com)

### **Sequence**

MSPILGYWKIKGLVQPTRLLEYLEEKYEEHLYERDEGDKWRNKKFELGLEFPNLPYYI  
DGDVKLTQSMAIRYIADKHNMLGGCPKERAEISMLEGAVLDIRYGVSRIAYSKDFETLK  
VDFLSKLPPEMLKMFEDRLCHKTYLNGDHVTHPDFMLYDALDVVLYMDPMCLDAFPKLV  
CFKKRIEAIQIDKYLKSSKYIAWPLQGWAQTFGGGDHPPKSDLEVLFGPLGSRKKIF  
KPEELRQALMPTLEALYRQDPESLPFRQPVDPQLLGIPDYFDIVKNPMDLSTIKRKLDT  
GQYQEPWQYVDDVWLMFNNAWLYNRKTSRVYKFCSKLAEVFEQEIDPVMQSLG

OUR PRODUCTS ARE FOR RESEARCH USE ONLY. NOT FOR DIAGNOSTIC OR THERAPEUTIC USE.

To place your order, please contact us by Phone **1.858.829.3082** Fax **1.858.481.8694**  
Or you can Email us at: [info@bpsbioscience.com](mailto:info@bpsbioscience.com)  
Please visit our website at: [www.bpsbioscience.com](http://www.bpsbioscience.com)