

Data Sheet

TAF1, BD1 and BD2 (1400-1651)

Human, recombinant, N-terminal GST-tag
Catalog #: 31124
Lot #: 130403 **Conc.:** 3.89 mg/ml

Formulated in: 40 mM Tris-HCl, pH 8.0,
 110 mM NaCl, 2.2 mM KCl, and 20%
 glycerol.

Stability: >6 months at -80 °C

References:

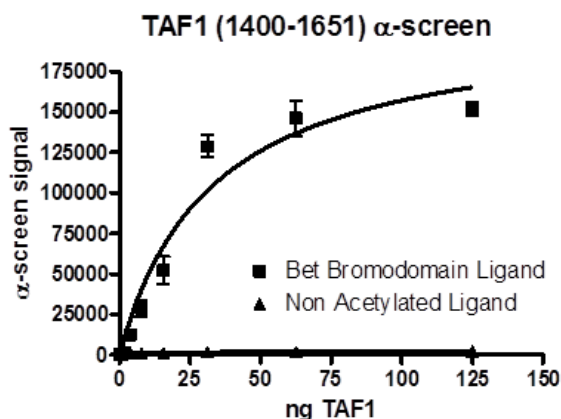
1. Sako W, *et al.*, *Neuroscience*. 2011 Aug 25;**189**:100-7.
2. Zaborowska J, *et al.*, *Transcription*. 2012 Mar 1;**3(2)**:92-104.

Description: Human Bromodomain TAF1, amino-acids 1400 – 1651 (GenBank Accession No. NM_004606) with N-terminal GST-tag, MW = 56.1 kDa, expressed in an *E. coli* expression system.

Assay Conditions: Assay was performed using TAF1 (BD1+ BD2) Inhibitor Screening Assay Kit (Cat# 32604). TAF1 protein is incubated with biotinylated acetyl-histone peptide substrate (Cat. #33000) in TAF1 assay buffer in a 10 µl reaction for 1 hour at RT. AlphaLISA® GSH acceptor beads (PerkinElmer) were then added, and the mixture was incubated for 30 minutes at room temperature (RT). AlphaScreen® Streptavidin-conjugated donor beads (PerkinElmer) were then added. After 10 minute incubation at RT, Alphacounts are measured.

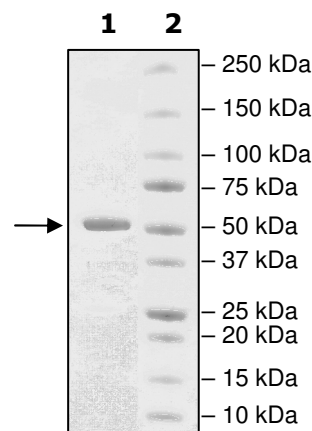
Application: Useful for the study of bromodomain binding assays, screening inhibitors, and selectivity profiling.

Quality Assurance



**4-20% SDS-PAGE
 Coomassie staining**

Lane 1:
 2 µg TAF1
Lane 2:
 Protein Marker
MW: 56.1 kDa
Purity: ≥99%



OUR PRODUCTS ARE FOR RESEARCH USE ONLY. NOT FOR DIAGNOSTIC OR THERAPEUTIC USE.

To place your order, please contact us by Phone **1.858.829.3082** Fax **1.858.481.8694**
 Or you can Email us at: info@bpsbioscience.com
 Please visit our website at: www.bpsbioscience.com



6044 Cornerstone Court West, Suite E
San Diego, CA 92121
Tel: 1.858.829.3082
Fax: 1.858.481.8694
Email: info@bpsbioscience.com

Protein Sequence:

TDPMVTLSSILESIIINDMRDLPNTYPFHTPVNAKVVKDYYKIITRPMDLQTLRENVKRL
YPSREEFREHLELIVKNSATYNGPKHSLTQISQSMLDLCDEKLKEKEDKLARLEKAIN
PLLDDDDQVAFSFLDNIVTQKMMAVPDSWPFHHPVNKKFVPDYKVVNPNMDLETIR
KNISKHKYQSRESFLDDVNLILANSVKYNGPESQYTKTAQEIVNVCYQTLTEYDEHLT
QLEKDICTAKEAALEEAE

OUR PRODUCTS ARE FOR RESEARCH USE ONLY. NOT FOR DIAGNOSTIC OR THERAPEUTIC USE.

To place your order, please contact us by Phone **1.858.829.3082** Fax **1.858.481.8694**
Or you can Email us at: info@bpsbioscience.com
Please visit our website at: www.bpsbioscience.com