

Data Sheet

PB1 (BD4)

Human, recombinant, N-terminal HIS-tag

Catalog #: 31122

Lot #: 120502-GC **Conc.:** 0.3 mg/ml

Formulated in: 50 mM Tris-HCl, pH 8.0, 150 mM NaCl, and 10% glycerol.

Stability: >6 months at -80°C

References:

1. Sekine, I., *et al.*, *Oncogene*. 2005 Apr 14;**24(16)**:2735-8.
2. Shibata, Y., *et al.*, *Dev Biol*. 2012 Jan 15;**361(2)**:349-57.

Description:

Human polybromo 1 (PB1), also known as PBRM1 and BRG1-associated factor 180, variant 2, (GenBank Accession No. NM_018313), amino-acids 528 – 618 with N-terminal His-tag, MW = 11.7 kDa, expressed in an *E. coli* cell expression system.

Application:

Useful for the study of bromodomain binding assays, screening inhibitors, and selectivity profiling.

Quality Assurance

4-20% SDS-PAGE Coomassie staining

Lane 1:

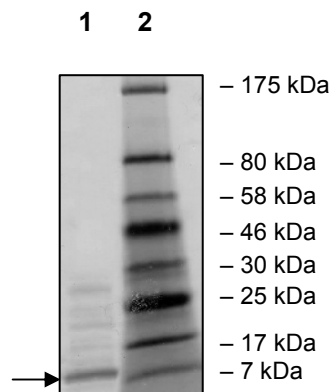
1 µg PB1

Lane 2:

Protein Marker
BioLabs (#P7708L)

MW: 11.7 kDa

Purity: ≥75%



OUR PRODUCTS ARE FOR RESEARCH USE ONLY. NOT FOR DIAGNOSTIC OR THERAPEUTIC USE.

To place your order, please contact us by Phone **1.858.829.3082** Fax **1.858.481.8694**

Or you can Email us at: info@bpsbioscience.com

Please visit our website at: www.bpsbioscience.com



6044 Cornerstone Court West, Suite E
San Diego, CA 92121
Tel: 1.858.829.3082
Fax: 1.858.481.8694
Email: info@bpsbioscience.com

Protein Sequence:

MHHHHHHNVVLEAREPGSGRRLCDLFMVKPSKKDYPDYYKIILEPMDLKII EHNIRND
KYAGEEGMIEDMKLMFRNARHYNEEGSQVYNDAHILEKLL

OUR PRODUCTS ARE FOR RESEARCH USE ONLY. NOT FOR DIAGNOSTIC OR THERAPEUTIC USE.

To place your order, please contact us by Phone **1.858.829.3082** Fax **1.858.481.8694**
Or you can Email us at: info@bpsbioscience.com
Please visit our website at: www.bpsbioscience.com