

## Data Sheet

### PCAF (720-end)

Human, recombinant, N-terminal His- tag  
Catalog #: 31120  
Lot#: 130403                      Conc.: 2.45 mg/ml

**Formulated in:** 45 mM Tris-HCl, pH 8.0, 124 mM NaCl, 2.4 mM KCl, and 10% glycerol.

**Stability:** >6 months at -80 °C

#### References:

1. Zeng, L., *et al.*, *Structure* 2008 Apr;**16(4)**:643-52.
2. Kanno, T., *et al.*, *Mol. Cell.* 2004 Jan 16;**13(1)**:33-43.

#### Description:

Human bromodomain p300/CREB binding protein associated factor (pCAF), also known as KAT2B, GenBank Accession No. NM\_003884, a.a. 720-832 (end), with N-terminal His-tag, MW=14.5 kDa, expressed in an *E. coli* expression system.

#### Application:

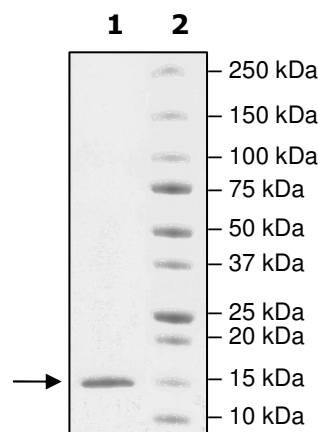
Useful for the study of enzyme kinetics, screening inhibitors, and selectivity profiling.

## Quality Assurance

### 4-20% SDS-PAGE Coomassie staining

**Lane 1:**  
2 µg PCAF  
**Lane 2:**  
Protein Marker

**MW:** 14.5 kDa  
**Purity:** ≥99%



OUR PRODUCTS ARE FOR RESEARCH USE ONLY. NOT FOR DIAGNOSTIC OR THERAPEUTIC USE.

To place your order, please contact us by Phone **1.858.829.3082** Fax **1.858.481.8694**  
Or you can Email us at: [info@bpsbioscience.com](mailto:info@bpsbioscience.com)  
Please visit our website at: [www.bpsbioscience.com](http://www.bpsbioscience.com)



6044 Cornerstone Court W, Ste E  
San Diego, CA 92121  
**Tel:** 1.858.829.3082  
**Fax:** 1.858.481.8694  
**Email:** [info@bpsbioscience.com](mailto:info@bpsbioscience.com)

**Protein Sequence:**

**MHHHHHHH**KEPRDPDQLYSTLKSILQQVKSHQSAWPFMEPVKRTEAPGYEYEVIRFPMD  
LKTMSERLKNRYVSKKLFMADLQRVFTNCKEYNPPESEYYKCANILEKFFFSKIKEA  
GLIDK

OUR PRODUCTS ARE FOR RESEARCH USE ONLY. NOT FOR DIAGNOSTIC OR THERAPEUTIC USE.

To place your order, please contact us by Phone **1.858.829.3082** Fax **1.858.481.8694**  
Or you can Email us at: [info@bpsbioscience.com](mailto:info@bpsbioscience.com)  
Please visit our website at: [www.bpsbioscience.com](http://www.bpsbioscience.com)