

Data Sheet

p300 (1046-1163)

Human, recombinant, N-terminal His- tag
Catalog #: 31118
Lot#: 120524 Conc.: 2.36 mg/ml

Formulated in: 45 mM Tris-HCl, pH 8.0,
124 mM NaCl, 2.4 mM KCl, 225 mM
Imidazole, 3 mM DTT, 10% glycerol.

Stability: >6 months at -80 °C

References:

1. Gui, Y., *et al.*, *Nat. Genet.* 2011 Aug 7;
43(9) : 875 – 878.
2. Morin, R.D., *et al.*, *Nature.* 2011 Jul 27;
476(7360) : 298 – 303.
3. Zhao, Z., *et al.*, *Brain Res. Bull.* 2011
Oct 10; **86(3-4)** : 189 – 194.

Description:

Human bromodomain E1A binding protein p300, also known as EP300, KAT3B, or RSTS2, GenBank Accession No. NM_001429, a.a. 1046-1163, with N-terminal His-tag, MW=15.1 kDa, expressed in an *E. coli* expression system.

Application:

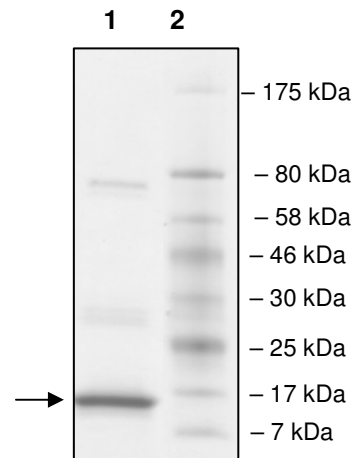
Useful for the study of enzyme kinetics, screening inhibitors, and selectivity profiling.

Quality Assurance

4-20% SDS-PAGE Coomassie staining

Lane 1:
9 µg EP300
Lane 2:
Protein Marker

MW: 15.1 kDa
Purity: ≥83%



OUR PRODUCTS ARE FOR RESEARCH USE ONLY. NOT FOR DIAGNOSTIC OR THERAPEUTIC USE.

To place your order, please contact us by Phone **1.858.829.3082** Fax **1.858.481.8694**
Or you can Email us at: info@bpsbioscience.com
Please visit our website at: www.bpsbioscience.com



6044 Cornerstone Court W, Ste E
San Diego, CA 92121
Tel: 1.858.829.3082
Fax: 1.858.481.8694
Email: info@bpsbioscience.com

Protein Sequence:

MHHHHHHKKKIFKPEELRQALMPTLEALYRQDPESLPFRQPVDPQLLGIPDYFDIVKSP
MDLSTIKRKLDTGQYQEPWQYVDDIWLMFNNAWLYNRKTSRVYKYCSKLSEVFEQEI
DPVMQSLGYC

OUR PRODUCTS ARE FOR RESEARCH USE ONLY. NOT FOR DIAGNOSTIC OR THERAPEUTIC USE.

To place your order, please contact us by Phone **1.858.829.3082** Fax **1.858.481.8694**
Or you can Email us at: info@bpsbioscience.com
Please visit our website at: www.bpsbioscience.com