

## Data Sheet

### WDR9 (1308 – 1436)

Human, recombinant, N-terminal HIS-tag  
**Catalog #:** 31115  
Lot #: 120328-GF      Conc.: 0.36 mg/ml

**Formulated in:** 40 mM Tris-HCl, pH 8.0,  
110 mM NaCl, 2.2 mM KCl, 0.04 % Tween-  
20, 20% glycerol.

**Stability:** >6 months at –80 °C

#### References:

1. Huang, H., *et al.*, *Dev Dyn.* 2003 Aug; **227(4)**: 608-14.
2. Ramos, VC., *et al.*, *Biochim Biophys Acta.* 2002 Sep 27; **1577(3)**: 377-83.

#### Description:

Human bromodomain and WD repeat domain containing 1 (BRWD1) or WDR9, amino-acids 1308 - 1436, (GenBank Accession No. NM\_018963) with N-terminal HIS-tag, MW = 16.2 kDa, expressed in an *E. coli* expression system.

#### Application:

Useful for the study of bromodomain binding assays, screening inhibitors, and selectivity profiling.

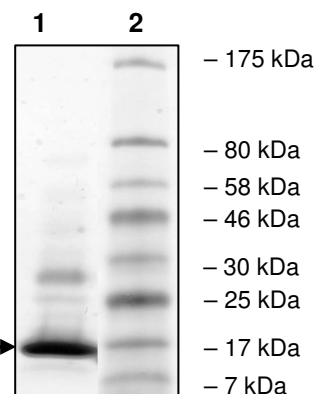
## Quality Assurance

### 4-20% SDS-PAGE Coomassie staining

**Lane 1:**  
3 µg WDR9

**Lane 2:**  
Protein Marker  
BioLabs (#P7708L)

**MW:** 16.2 kDa  
**Purity:** ≥82% →



OUR PRODUCTS ARE FOR RESEARCH USE ONLY. NOT FOR DIAGNOSTIC OR THERAPEUTIC USE.

To place your order, please contact us by Phone **1.858.829.3082** Fax **1.858.481.8694**  
Or you can Email us at: [info@bpsbioscience.com](mailto:info@bpsbioscience.com)  
Please visit our website at: [www.bpsbioscience.com](http://www.bpsbioscience.com)



6044 Cornerstone Court West, Suite E  
San Diego, CA 92121  
**Tel:** 1.858.829.3082  
**Fax:** 1.858.481.8694  
**Email:** [info@bpsbioscience.com](mailto:info@bpsbioscience.com)

**Protein Sequence:**

MHHHHHIRATNYVESNWKKQCKELVNLIFQCEDSEPFQRQPVDLVEYDPDYRDIIDTPM  
DFGTVRETLDAGNYDSPLEFCKDIRLIFSNAKAYTPNKRSKIYSMTLRLSALFEEKMKKIS  
SDFKIGQKFNEKLRRSQ

OUR PRODUCTS ARE FOR RESEARCH USE ONLY. NOT FOR DIAGNOSTIC OR THERAPEUTIC USE.

To place your order, please contact us by Phone **1.858.829.3082** Fax **1.858.481.8694**  
Or you can Email us at: [info@bpsbioscience.com](mailto:info@bpsbioscience.com)  
Please visit our website at: [www.bpsbioscience.com](http://www.bpsbioscience.com)