

## Data Sheet

### BRPF1 (627-746)

Human, recombinant, N-terminal HIS-tag  
**Catalog #:** 31112  
Lot #: 120327-GF      Conc.: 0.42 mg/ml

**Formulated in:** 40 mM Tris-HCl, pH 8.0,  
110 mM NaCl, 2.2 mM KCl, 0.04 % Tween-  
20, 20% glycerol.

**Stability:** >6 months at -80 °C

#### References:

1. Laue, K., *et al.*, *Development*. 2008  
June; **(135)111**: 1935-46.
2. Mayya, V., *et al.*, *Sci Signal*. 2009 Aug  
18; **2(84)**: ra46.

#### Description:

Human Bromodomain and PHD finger  
containing 1, or BRPF1, amino-acids 627  
– 746 (GenBank Accession No.  
NM\_001003694) with N-terminal HIS-tag,  
MW = 15.1 kDa, expressed in an *E. coli*  
expression system.

#### Application:

Useful for the study of bromodomain  
binding assays, screening inhibitors, and  
selectivity profiling.

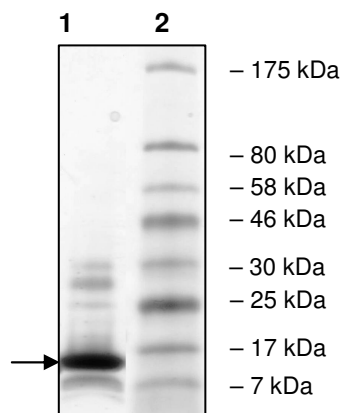
## Quality Assurance

### 4-20% SDS-PAGE Coomassie staining

**Lane 1:**  
3 µg BRPF1

**Lane 2:**  
Protein Marker  
BioLabs (#P7708L)

**MW:** 15.1 kDa  
**Purity:** ≥69%



OUR PRODUCTS ARE FOR RESEARCH USE ONLY. NOT FOR DIAGNOSTIC OR THERAPEUTIC USE.

To place your order, please contact us by Phone **1.858.829.3082** Fax **1.858.481.8694**  
Or you can Email us at: [info@bpsbioscience.com](mailto:info@bpsbioscience.com)  
Please visit our website at: [www.bpsbioscience.com](http://www.bpsbioscience.com)



6044 Cornerstone Court West, Suite E  
San Diego, CA 92121  
**Tel:** 1.858.829.3082  
**Fax:** 1.858.481.8694  
**Email:** [info@bpsbioscience.com](mailto:info@bpsbioscience.com)

**Protein Sequence:**

MHHHHHMQLT PFLILLRKTLEQLQEKDTGNIFSEPVPL  
SEVTELDVDPDYLDHIKKPMDFFTMKQNLEAYRYLNFDDF  
EEDFNLI VSNCLKYNAKDTIFYRAAVRLREQGGAVLRQAR  
RQAEKMG

OUR PRODUCTS ARE FOR RESEARCH USE ONLY. NOT FOR DIAGNOSTIC OR THERAPEUTIC USE.

To place your order, please contact us by Phone **1.858.829.3082** Fax **1.858.481.8694**  
Or you can Email us at: [info@bpsbioscience.com](mailto:info@bpsbioscience.com)  
Please visit our website at: [www.bpsbioscience.com](http://www.bpsbioscience.com)