

Data Sheet

TAF1L (1517-1649)

Human, recombinant, N-terminal GST tag
Catalog #: 31106
 Lot #: 120723-G Conc.: 1.1 mg/ml

Formulated in: 45 mM Tris-HCl, pH 8.0,
 124 mM NaCl, 2.4 mM KCl, and 10%
 glycerol.

Stability: >6 months at -80 °C

Reference:

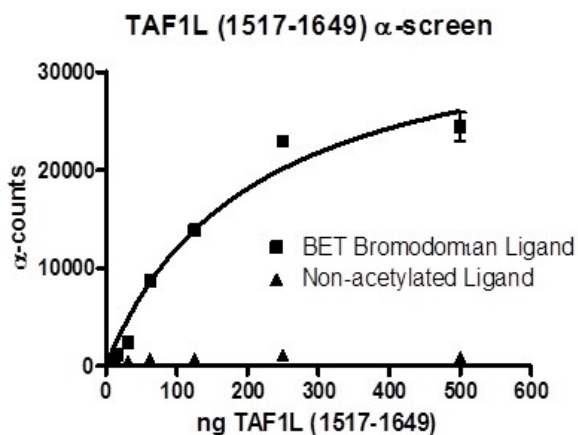
Wang, P.J., *et. al. Hum. Mol. Genet.* 2002
 Sep 15; **11(19)**: 2341-2346.

Description: Human TAF1 RNA polymerase II, also known as TAF1L or TAT box binding protein (TBP)-associated factor, amino-acids 1517 – 1649 (GenBank Accession No. NM_153809) with N-terminal GST tag, MW = 42.3 kDa, expressed in an *E. coli* expression system.

Assay Conditions: TAF1L (1517-1649) protein is incubated with biotinylated acetyl-histone peptide substrate (Cat. #33000) in TAF1L assay buffer in a 10 µl reaction for 1 hour at RT. AlphaLISA® GSH acceptor beads (Perkin Elmer) are added, and the mixture is incubated for 30 minutes at room temperature (RT). AlphaScreen® Streptavidin-conjugated donor beads (Perkin Elmer) are then added. After 10 minute incubation at RT, measure Alphascreen counts.

Application: Useful for the study of bromodomain binding assays, screening inhibitors, and selectivity profiling.

Quality Assurance

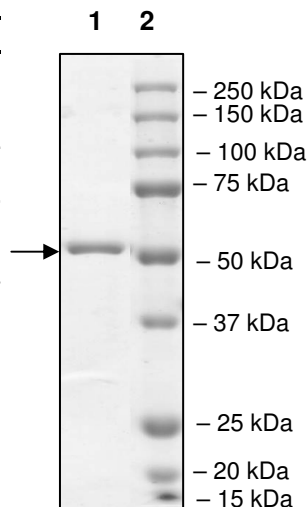


4-20% SDS-PAGE Coomassie staining

Lane 1:
4 µg TAF1L

Lane 2:
Protein Marker

MW: 42.3 kDa
Purity: ≥99%



OUR PRODUCTS ARE FOR RESEARCH USE ONLY. NOT FOR DIAGNOSTIC OR THERAPEUTIC USE.

To place your order, please contact us by Phone **1.858.829.3082** Fax **1.858.481.8694**
 Or you can Email us at: info@bpsbioscience.com
 Please visit our website at: www.bpsbioscience.com



6044 Cornerstone Court West, Suite E
San Diego, CA 92121
Tel: 1.858.829.3082
Fax: 1.858.481.8694
Email: info@bpsbioscience.com

Sequence:

MSPILGYWKIKGLVQPTRLLEYLEEKYEEHLYERDEGDKWRNKKFELGLEFPNLPYYI
DGDVKLTQSMAIRYIADKHNMLGGCPKERAIEISMLEGAVLDIRYGVSRIAYSKDFETLK
VDFLSKLPEMLKMFEDRLCHKTYLNGDHVTHPDFMLYDALDVVLYMDPMCLDAFPKLV
CFKKRIEAIQIDKYLKSSKYIAWPLQGQATFGGGDHPPKSDLEVLFGGPLGSLLDDD
DQVAFSFILDNIVTQKMMAVPDSWPFHHPVNKKFVPDYKMIIVNPVDLETIRKNISKHK
YQSRESFLDDVNLILANSVKYNGPESQYTKTAQEIVNICYQTITEYDEHLTQLEKDICTA
KEAALEEAE

OUR PRODUCTS ARE FOR RESEARCH USE ONLY. NOT FOR DIAGNOSTIC OR THERAPEUTIC USE.

To place your order, please contact us by Phone **1.858.829.3082** Fax **1.858.481.8694**
Or you can Email us at: info@bpsbioscience.com
Please visit our website at: www.bpsbioscience.com