

## Data Sheet

### **TAF1L (1398-1516)**

Human, recombinant, N-terminal HIS tag

**Catalog #:** 31103

Lot #: 120216G      Conc.: 0.35 mg/ml

**Formulated in:** 40 mM Tris-HCl, pH 8.0,  
110 mM NaCl, 2.2 mM KCl, 0.05% Tween-  
20, and 20% glycerol.

**Stability:** >6 months at -80°C

**Reference:**

Wang, P.J., *et. al.*, *Hum. Mol. Genet.* 2002  
Sep 15; **11(19)**: 2341-2346.

**Description:**

Human TAF1 RNA polymerase II, TAT box binding protein (TBP)-associated factor, also known as TAF1L, amino-acids 1398 – 1516 (GenBank Accession No. NM\_153809) with N-terminal HIS tag, MW = 14.8 kDa, expressed in an *E. coli* expression system.

**Application:**

Useful for the study of bromodomain binding assays, screening inhibitors, and selectivity profiling.

## **Quality Assurance**

**4-20% SDS-PAGE  
Coomassie staining**

**Lane 1:**

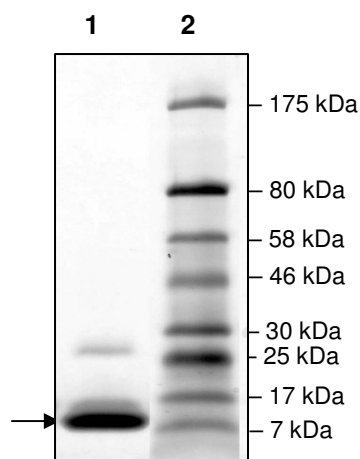
4 µg TAF1L

**Lane 2:**

Protein Marker  
BioLabs (#P7708L)

**MW:** 14.8 kDa

**Purity:** ≥93%



OUR PRODUCTS ARE FOR RESEARCH USE ONLY. NOT FOR DIAGNOSTIC OR THERAPEUTIC USE.

To place your order, please contact us by Phone **1.858.829.3082** Fax **1.858.481.8694**

Or you can Email us at: [info@bpsbioscience.com](mailto:info@bpsbioscience.com)

Please visit our website at: [www.bpsbioscience.com](http://www.bpsbioscience.com)