

Data Sheet

Anti-GST-like protein

Mouse Monoclonal Antibody

Catalog #: 25014

Specificity:

Recognizes GST-like protein from insect Sf9 cells (*Spodoptera frugiperda*). No cross-reaction with GST tag from *S. japonicum* or GST fusion proteins.

Immunogen:

Full length *S. frugiperda* GST-like protein, purified from Sf9 cells.

Applications:

IP, Removal of contaminating GST-like protein from insect expressed GST-fusion proteins.

Image:

4-20% SDS-PAGE Coomassie staining (reducing)

Lane 1:

2.5 µg IgG

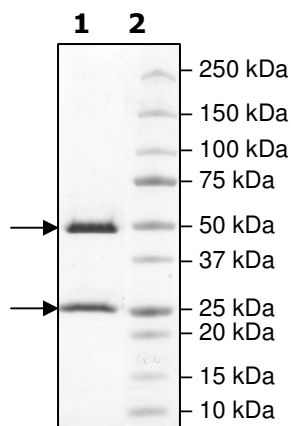
Lane 2:

Protein Marker

MW:

Heavy chain 50kDa

Light chain 25kDa



Purity: ≥99%

Host Species: Mouse

Clone: 1C7

Isotype: mouse IgG₁ κ

Formulation: 1mg/mL PBS, pH 7.2

Working Conditions:

Immunoprecipitation: 1:100

Incubate GST-fusion protein with antibody and protein A or L beads for 30 minutes. Remove affinity beads for GST-like free protein. For best results don't use with solutions that contain DTT as this will reduce antibody disulfide bonds.

Purification:

Protein A affinity chromatography from hybridoma media

Storage and Stability:

Store at -20°C for up to 2 years. Centrifuge after first thaw to maximize product recovery. Aliquot to avoid repeated freeze-thaw cycles. Aliquots are stable at 4°C for 1-2 weeks.

OUR PRODUCTS ARE FOR IN VITRO RESEARCH USE ONLY. NOT FOR DIAGNOSTIC OR THERAPEUTIC USE.

To place your order, please contact us by Phone **1.858.829.3082** Fax **1.858.481.8694**

Or you can Email us at: info@bpsbioscience.com

Please visit our website at: www.bpsbioscience.com

4-20% SDS-PAGE
Coomassie staining

Lane 1:
GST-fusion protein with
GST-like contaminate
Lane2:
After IP of Anti-GST-like
Lane 3:
Protein Marker

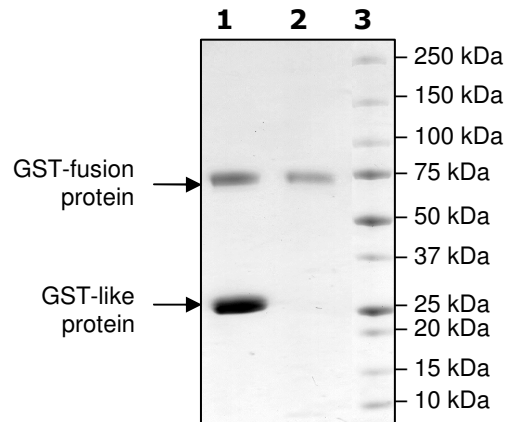


Figure 1: SDS-PAGE analysis for the removal of GST-like protein (25 kDa) from a GST-fusion protein (68 kDa) purified from insect cells. Anti-GST-like antibody and Protein L beads were added to purified GST-fusion protein (**lane 1**). After incubating for 30 minutes, the GST-like protein/Protein L beads were removed, resulting in pure GST-fusion protein (**lane 2**).