

Data Sheet

Anti-Myc Tag

Mouse Monoclonal Antibody
Anti-Myc Tag (Myc.A7 / M19)
Catalog #: 25012

Specificity:

Recognizes the N-terminal or C-terminal Myc-tagged fusion proteins

Immunogen:

Synthetic peptide (EQKLISEEDL) corresponding to amino acids 410-419 of Human c-Myc, conjugated to KLH

Applications:

Dot Blot, ELISA, IP, ICC, WB

Image:

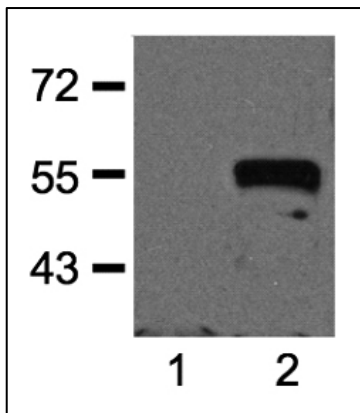


Fig. 1:1000 (1 μ g/mL) Ab dilution probed against HEK293 cells transfected with Myc-tagged protein vector; untransfected (1) and transfected (2).

Clonality | Host Species | Isotype:

Myc.A7 / M19 | Mouse | IgG1

Formulation:

1mg/mL in 10mM PBS, pH 7.2, with 0.05% NaN₃

Sensitivity:

WB (with ECL): 10-50 ng of Myc-tagged fusion proteins

Working Conditions:

WB (with ECL): 1:1000-3000 dilution (incubate for 1 hour at room temperature)

ICC: 1:500-2000 dilution

For best results with other assays (e.g.: Dot Blot, ELISA, IP, etc.), please determine optimal working dilution by titration test.

Purification:

Protein A affinity chromatography from mouse ascites fluid

Storage and Stability:

Store at -20°C for up to 2 years. Centrifuge after first thaw to maximize product recovery. Aliquot to avoid repeated freeze-thaw cycles. Store aliquots at 4°C for 1-2 weeks

OUR PRODUCTS ARE FOR IN VITRO RESEARCH USE ONLY. NOT FOR DIAGNOSTIC OR THERAPEUTIC USE.

To place your order, please contact us by Phone **1.858.829.3082** Fax **1.858.481.8694**

Or you can Email us at: info@bpsbioscience.com

Please visit our website at: www.bpsbioscience.com