

Data Sheet

Anti-ERK1

Mouse Monoclonal Antibody
Anti-ERK1 (E19) Signal Transduction
Catalog #: 25004

Specificity:

Recognizes only the ERK1 protein.

Immunogen:

Recombinant full length ERK1 protein

Applications:

IP, WB

Images:

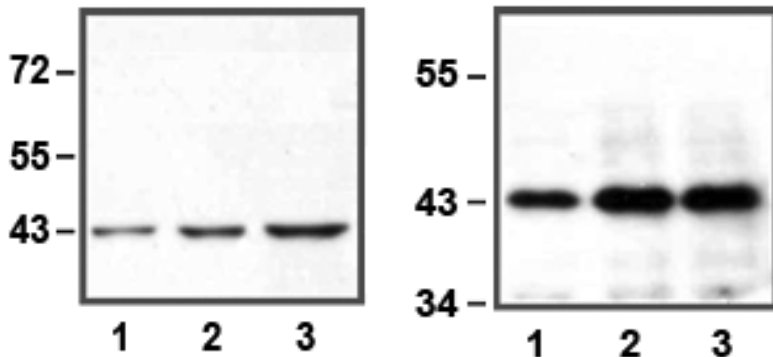


Fig. LEFT: 1:10,000 (0.1 µg/mL) Ab dilution used in WB of HEK293 cell lysate; 1 µg (1), 5 µg (2), and 10 µg (3) of cell lysate used; RIGHT: IP of anti-ERK1 using 50 µg of Jurkat cell lysate; 0.5 µg (1), 1 µg (2), and 2 µg (3) of anti-ERK1 used.

Clonality | Host Species | Isotype:

E19 | Mouse | IgG1

Formulation:

1mg/mL in 10mM PBS, pH 7.2, with 0.05% NaN₃

Cross Reactivity:

WB: ERK1 from human and mouse cells. IP: ERK1 from human cells. ERK1 from other species may also be detectable. Does not recognize ERK2 protein.

Working Conditions:

WB (with ECL): 1:1000-10,000 dilution (incubate for one hour at room temperature) For best results with other assays (e.g.: IP, etc.), please determine optimal working dilution by titration test

Purification:

Protein A affinity chromatography from mouse ascites fluid

Storage:

Store at -20°C for up to 2 years. Centrifuge after first thaw to maximize product recovery. Aliquot to avoid repeated freeze-thaw cycles. Store aliquots at 4°C for 1-2 weeks

OUR PRODUCTS ARE FOR IN VITRO RESEARCH USE ONLY. NOT FOR DIAGNOSTIC OR THERAPEUTIC USE.

To place your order, please contact us by Phone **1.858.829.3082** Fax **1.858.481.8694**

Or you can Email us at: info@bpsbioscience.com

Please visit our website at: www.bpsbioscience.com