

Data Sheet

Anti-V5 Tag

Mouse Monoclonal Antibody
Anti-V5 Tag (E10 / V4RR)
Catalog #: 25001

Specificity:

Recognizes V5 (GKPIPPELLGLDST) tagged fusion proteins

Immunogen:

GKPIPPELLGLDST (V5) synthetic peptide conjugated to KLH

Applications:

Dot Blot, ELISA, IP, ICC, WB

Image:

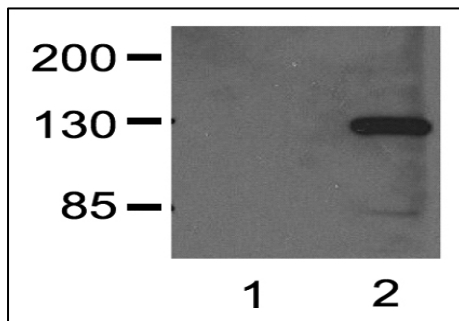


Fig. 1:000 (1 μ g/mL) Ab dilution probed against HEK293 cells transfected with V5-tagged protein vector; untransfected (1) and transfected (2).

Clonality | Host Species | Isotype:

E10 / V4RR | Mouse | IgG1

Formulation:

1mg/mL in 10mM PBS, pH 7.2, with 0.05% NaN₃

Sensitivity:

WB (with ECL): 1-2ng of V5-tagged fusion proteins

Working Conditions:

WB (with ECL): 1:1000-3000 dilution (incubate for 1 hour at room temperature)
ICC: 1:500-2000 dilution
For best results with other assays (e.g.: Dot Blot, ELISA, IP, etc.), please determine optimal working dilution by titration test

Purification:

Protein A affinity chromatography from culture supernatant of hybridoma cells grown in a bioreactor

Storage and Stability:

Store at -20 $^{\circ}$ C for up to 2 years. Centrifuge after first thaw to maximize product recovery. Aliquot to avoid repeated freeze-thaw cycles. Store aliquots at 4 $^{\circ}$ C for 1-2 weeks

OUR PRODUCTS ARE FOR IN VITRO RESEARCH USE ONLY. NOT FOR DIAGNOSTIC OR THERAPEUTIC USE.

To place your order, please contact us by Phone **1.858.829.3082** Fax **1.858.481.8694**

Or you can Email us at: info@bpsbioscience.com

Please visit our website at: www.bpsbioscience.com