

## Data Sheet

### PDE4B3, GST-Tag

Human, Recombinant, N-terminal GST tag

**Catalog #:** 11675

**Lot #:** 180606-G

**Conc.:** 0.14 mg/ml

**Formulated in:** 40 mM Tris-HCl, pH 8.0, 110 mM NaCl, 2.2 mM KCl, 0.04% Tween-20, 3 mM DTT and 20% glycerol.

**Stability:** At least 6 months at  $-80^{\circ}\text{C}$ . Avoid freeze/thaw cycles. Storing diluted enzyme is not recommended, if necessary, use carrier protein (BSA 0.1 – 0.5%).

**References:**

1. Ahmed, T., *et al.*, *Neuroscience*. **117(3)**, 627-638 (2003).
2. Millar, J., *et al.*, *Science*. **310(5751)**, 1187-1191 (2005).

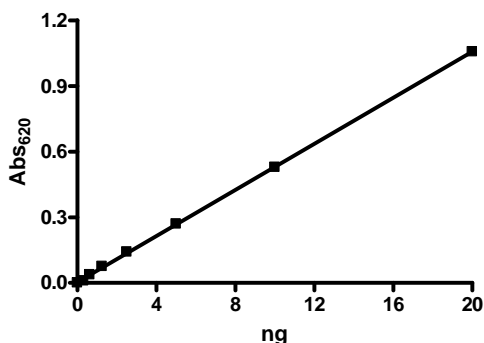
**Description:** Human PDE4B3 (GenBank Accession No. NM\_001037340), 2-721 (end), with N-terminal GST tag, MW=108 kDa, expressed in a Baculovirus infected Sf9 cell expression system.

**Specific Activity:** 10,500 pmole/min/ $\mu\text{g}$ . Assay conditions: One unit is defined as the amount of enzyme that will convert 1 pmole of 3', 5'-cAMP to 5'-AMP per min at  $37^{\circ}\text{C}$ . Assay condition: 10 mM Tris-HCl, pH 7.4, 10 mM  $\text{MgCl}_2$ , 0.1 mg/ml BSA, 0.05% Tween-20, 200  $\mu\text{M}$  cAMP, and serial dilutions of PDE4B3 at  $37^{\circ}\text{C}$  for 20 min. Quantified by 5' nucleotidase cleaving the 5'-AMP product and releasing the phosphate group which is detected by Malachite Green Reagent.

**Application:** Useful for the study of enzyme kinetics, screening inhibitors, and selectivity profiling.

## Quality Assurance

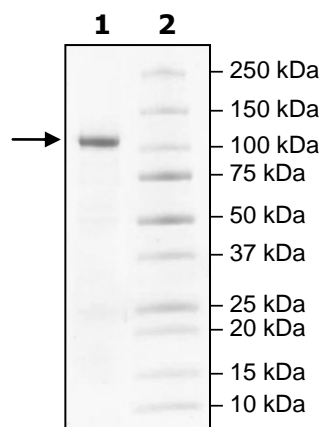
### Specific Activity



### 4-20% SDS-PAGE Coomassie staining

**Lane 1:**  
2ug PDE4B3  
**Lane 2:**  
Protein Marker

**MW:** 108 kDa  
**Purity:**  $\geq 90\%$



OUR PRODUCTS ARE FOR RESEARCH USE ONLY. NOT FOR DIAGNOSTIC OR THERAPEUTIC USE.

To place your order, please contact us by Phone **1.858.829.3082** Fax **1.858.481.8694**

Or you can Email us at: [info@bpsbioscience.com](mailto:info@bpsbioscience.com)

Please visit our website at: [www.bpsbioscience.com](http://www.bpsbioscience.com)