

## Data Sheet

### MMP8, His-tag

Human, recombinant, C-terminal His-tag

**Catalog #:** 100552

**Lot #:** 191217-1

**Conc.:** 0.59 mg/ml

**Formulated in:** 40 mM Tris-HCl, pH 8.0, 110 mM NaCl, 2.2 mM KCl, and 20% glycerol.

**Stability:** At least 6 months at  $-80^{\circ}\text{C}$ . Avoid freeze/thaw cycles.

**References:**

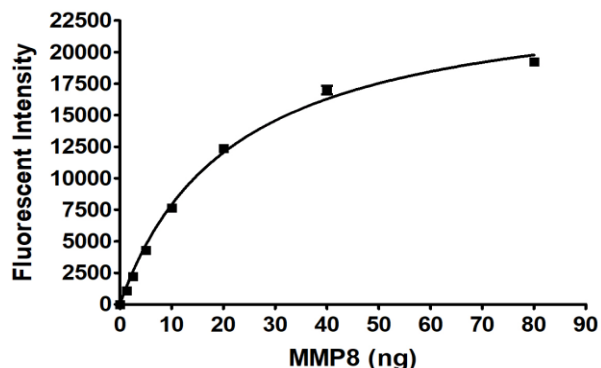
1. Palavalli, L.H., *et al.*, *Nature Genetics* 2009 Mar;**41**:518-520.
2. Wang, H., *et al.*, *Hum. Molec. Genetics* 2004 Nov;**13(21)**:2659-69.

**Description:** Human matrix metalloproteinase 8 (MMP8), also known as HNC, CLG1, MMP-8 and PMNL-CL, GenBank Accession No. NM\_002424, a.a. 21-467(end) with C-terminal His-tag, expressed in a HEK293 cell expression system. MW=52 kDa. This protein runs at a higher molecular weight due to glycosylation.

**Specific Activity:** 280 pmol/min/ $\mu\text{g}$   
 Assay Conditions: MMP-8 is activated in 50 mM Tris-HCl, pH7.4, 150 mM NaCl, 10 mM  $\text{CaCl}_2$ , 0.05% Brij-35 and 1 mM APMA at 37C for 2 hours. Activity assay is conducted in 50 mM Tris-HCl, pH7.4, 150 mM NaCl, 10 mM  $\text{CaCl}_2$ , 0.05% Brij-35 and 1 $\mu\text{M}$  390 MMP substrate at room temperature for 30minutes. The fluorescence intensity is measured at exc328nm/em393nm.

### Quality Assurance

**Specific Activity**

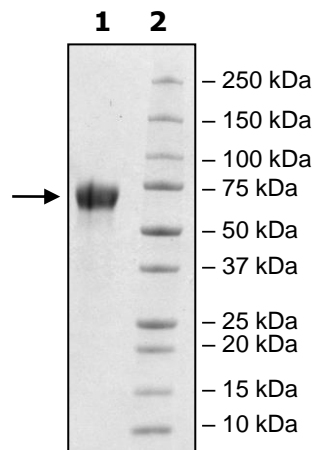


**4-20% SDS-PAGE  
Coomassie staining**

**Lane 1:**  
4 $\mu\text{g}$  MMP8  
**Lane 2:**  
Protein Marker

**MW:** 52 kDa +  
Glycans

**Purity:**  $\geq 90\%$



OUR PRODUCTS ARE FOR RESEARCH USE ONLY. NOT FOR DIAGNOSTIC OR THERAPEUTIC USE.

To place your order, please contact us by Phone **1.858.202.1401** Fax **1.858.481.8694**

Or you can Email us at: [info@bpsbioscience.com](mailto:info@bpsbioscience.com)

Please visit our website at: [www.bpsbioscience.com](http://www.bpsbioscience.com)