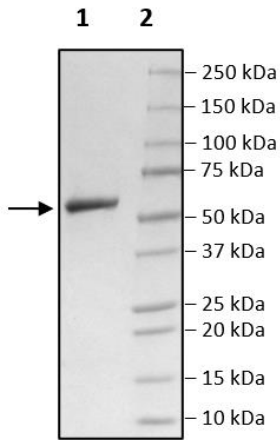


## Product Information

<b>Description:</b>	Anti-CD19-Anti-CD3 Bispecific Molecule is a purified recombinant human bispecific T cell Engager (BiTE®). This molecule contains a C-terminal His-Tag (6xHis) and it is similar to Blinatumomab. This molecule has been tested for specific activity in an ELISA binding assay.
<b>Background:</b>	The use of bispecific antibodies, in formats such as BiTE® (bispecific T-cell engager), has been approved for the treatment of diseases such as acute lymphoblastic leukemia (ALL). One example is blinatumomab. Bispecific antibodies can bring to cancer cells via an anti- cancer antigen, such as CD19 (cluster of differentiation 19), and T cells, and induce cytotoxicity against cancer cells. CD19 is considered a nearly ideal target for cancer immunotherapy, as it is expressed at low levels in immature B cells. This immature population is then able to replenish the B cell pool of the body after treatment. CD3 on the other hand is a T cell receptor essential for the activation of T cells. Further studies into anti-CD19-anti-CD3 molecules will deepen our knowledge of their mechanism of actions and provide further options for cancer treatment.
<b>Species:</b>	Human
<b>Concentration:</b>	0.4 mg/ml
<b>Expression System:</b>	HEK293
<b>Purity:</b>	≥90%
<b>Purification:</b>	Ni-NTA affinity purification of the His-tag protein from HEK293 cells.
<b>Format:</b>	Aqueous buffer solution.
<b>Formulated In:</b>	8 mM phosphate pH 7.4, 110 mM NaCl, 2.2 mM KCl, and 20% glycerol
<b>MW:</b>	54 kDa
<b>Endotoxin Level:</b>	70 EU/mg
<b>Stability:</b>	At least 12 months at -80°C.
<b>Storage:</b>	-80°C
<b>Instructions for Use:</b>	Thaw on ice and gently mix prior to use. DO NOT VORTEX. Perform a quick spin before opening. Aliquot into small volumes and flash freeze for long term storage. Avoid multiple freeze/thaw cycles.
<b>Assay Conditions:</b>	Assay was done according to Bispecific CD19:CD3 Bridging Chemiluminescence ELISA Kit (BPS Bioscience #82764) with various concentrations of Anti-CD19-Anti-CD3 Bispecific Molecule.
<b>Applications:</b>	Anti-CD19-Anti-CD3 Bispecific Molecule can be used as a reference BiTE® for studying CD19 <sup>+</sup> cancer cell-mediated T cell activation, using either primary T cells or reporter cell lines such as the NFAT Jurkat Luciferase Cell Line (#60621). It can be used in <i>in vitro</i> binding assays.

## Quality Control Data

### 4-20% SDS-PAGE Coomassie Staining



### CD19: CD3 Bridging ELISA

