

Data Sheet

Mesothelin, Avi-His-Tag, Biotin-Labeled

Human, Recombinant, C-terminal Avi-His-tag,
Biotin-Labeled

Catalog#: 100291

Lot#: 190329-1

Conc.: 1.13 mg/ml

Formulated in: 8 mM phosphate, pH 7.4,
110 mM NaCl, 2.2 mM KCl, and 20%
glycerol

Stability: At least 6 months at -80°C . *Avoid
freeze/thaw cycles.*

References:

1. Robinson, B, W.S. *et al.*, *The Lancet*.
2003; **362(9396)**: 1612-1616.
2. Chang, K. *et al.*, *PNAS*. 1996; **93(1)**:
136-140.

Description:

Human Mesothelin, also known as MSLN, MPF, SMRP, GenBank Accession No. NM_005823, a.a. 296–580 with C-terminal Avi-His-tag, expressed in a HEK293 cell expression system. This protein is enzymatically biotinylated using Avi-Tag™ technology. Biotinylation is confirmed to be $\geq 90\%$. MW = 35 kDa. This protein runs at a higher MW by SDS-PAGE due to glycosylation.

Quality Assurance

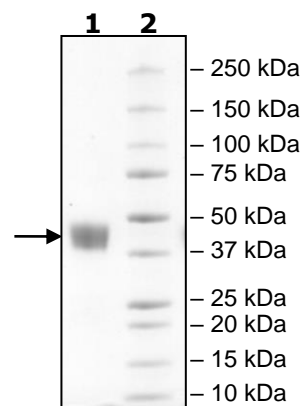
**4-20% SDS-PAGE
Coomassie staining**

Lane 1:
4 μg Mesothelin

Lane 2:
Protein Marker

MW:
35kDa+glycans

Purity: $\geq 90\%$



OUR PRODUCTS ARE FOR RESEARCH USE ONLY. NOT FOR DIAGNOSTIC OR THERAPEUTIC USE.

To place your order, please contact us by Phone **1.858.202.1401** Fax **1.858.481.8694**

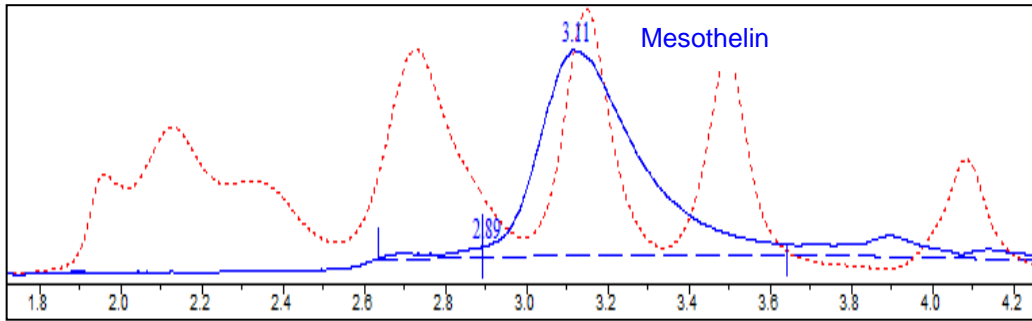
Or you can Email us at: info@bpsbioscience.com

Please visit our website at: www.bpsbioscience.com



6042 Cornerstone Court W, Ste B
San Diego, CA 92121
Tel: 1.858.202.1401
Fax: 1.858.481.8694
Email: info@bpsbioscience.com

Gel Filtration



<10% Aggregation

OUR PRODUCTS ARE FOR RESEARCH USE ONLY. NOT FOR DIAGNOSTIC OR THERAPEUTIC USE.

To place your order, please contact us by Phone **1.858.202.1401** Fax **1.858.481.8694**
Or you can Email us at: info@bpsbioscience.com
Please visit our website at: www.bpsbioscience.com