

## Data Sheet

### PCGF6

Human, recombinant, N-terminal GST- tag  
**Catalog #:** 55016  
**Lot #:** 130522-G2    **Conc.:** 0.14 mg/ml

**Formulated in:** 40 mM Tris. pH 8.0, 110 mM NaCl, 2.2 mM KCl, 0.04% Tween-20, and 20% glycerol.

**Stability:** >6 months at -80°C

**References:**

1. Junco SE, *et al.*, *Structure*. 2013; **21(4)**:665-71.
2. Kajiume T, *et al.*, *Exp Hematol*. 2012; **40(9)**:751-760.

**Description:**

Human Polycomb group RING finger protein 6 (PCGF6), GenBank Accession No. NM\_001011663, a.a. 2-350 (end), with N-terminal GST tag, MW=65.7 kDa, expressed in a baculovirus expression system.

**Application:**

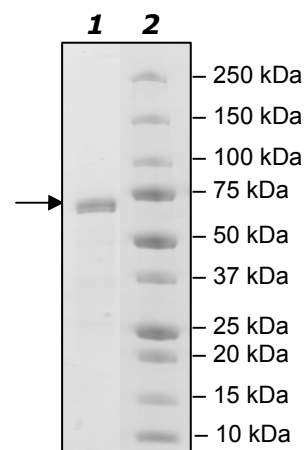
Useful for the study of enzyme kinetics, screening inhibitors, and selectivity profiling.

### Quality Assurance

**4-20% SDS-PAGE  
Coomassie staining**

**Lane 1:**  
2.1 µg PCGF6  
**Lane 2:**  
Protein Marker

**MW:** 65.7 kDa  
**Purity:** ≥86%



OUR PRODUCTS ARE FOR RESEARCH USE ONLY. NOT FOR DIAGNOSTIC OR THERAPEUTIC USE.

To place your order, please contact us by Phone **1.858.829.3082** Fax **1.858.481.8694**  
Or you can Email us at: [info@bpsbioscience.com](mailto:info@bpsbioscience.com)  
Please visit our website at: [www.bpsbioscience.com](http://www.bpsbioscience.com)



6044 Cornerstone Court West, Suite E  
San Diego, CA 92121  
Tel: 1.858.829.3082  
Fax: 1.858.481.8694  
Email: [info@bpsbioscience.com](mailto:info@bpsbioscience.com)

**Sequence:**

MSPILGYWKIKGLVQPTRLLEYLEEKYEEHLYERDEGDKWRNKKFELGLEFPNLPYYI  
DGDVKLTQSMARIYIADKHNMLGGCPKERAIEISMLEGAVLDIRYGVSRIAYSKDFETLK  
VDFLSKLPEMLKMFKDRLCHKTYLNGDHVTHPDFMLYDALDVVLYMDPMCLDAFPKLV  
CFKKRIEAIQIDKYLKSSKYIAWPLQGQWQATFGGGDHPPKSDPLVPRGSPGEGVA  
VVTAGSVGAAKTEGAAALPPPPVSPPALTPAPAAGEEGPAPLSETGAPGCSGSRPPE  
LEPERSLGRFRGRFEDEDEEELEEEEELEEEEEEEEEEDMSHFSLRLEGGRQSEDEEE  
RLINLSELPYILCSICKGYLIDATTITECLHTFCKSCIVRHFYYSNRCPKCNIVVHQTQPL  
YNIRLDRQLQDIVYKLVINLEEREKKQMHDYKERGYLEVPKPAVPQVPSSKGRSKKVL  
ESVFRIPPELDMSLLEFIGANEGTGHFKPLEKKFVRVSGEATIGHVEKFLRRKMGLDPA  
CQVDIICGDHILLEQYQTLREIRRAIGDAAMQDGLLVLHYGLVVSPKIKIT

OUR PRODUCTS ARE FOR RESEARCH USE ONLY. NOT FOR DIAGNOSTIC OR THERAPEUTIC USE.

To place your order, please contact us by Phone **1.858.829.3082** Fax **1.858.481.8694**  
Or you can Email us at: [info@bpsbioscience.com](mailto:info@bpsbioscience.com)  
Please visit our website at: [www.bpsbioscience.com](http://www.bpsbioscience.com)