

## Data Sheet

### APAF1

Human, recombinant, N-terminal His-tag,  
N-terminal FLAG-tag

**Catalog #:** 80116

**Lot#:** 130718-HF      **Conc.:** 0.13 mg/ml

**Formulated in:** 40 mM Tris-HCl, pH 8.0, 110 mM NaCl, 2.2 mM KCl, 0.04% Tween-20, 80 µg/ml FLAG peptide and 20% glycerol

**Stability:** >6 months at -80 °C

#### References:

1. Yuan, S., *et al.*, *Biochemistry*. 2013 Apr 2;**52(13)**:2319-27.
2. Saleh, A., *et al.*, *J Biol Chem*. 1999 Jun 18;**274(25)**:17941-5.

#### Description:

Human apoptotic peptidase activating factor 1 (APAF1), also known as CED4, (GenBank Accession No. NM\_013229), a.a. 2-1237(end) with N-terminal His-tag and N-terminal FLAG-tag, MW = 143 kDa, expressed in a baculovirus infected Sf9 cell expression system.

#### Application:

Useful for the study of enzyme kinetics, screening inhibitors, and selectivity profiling.

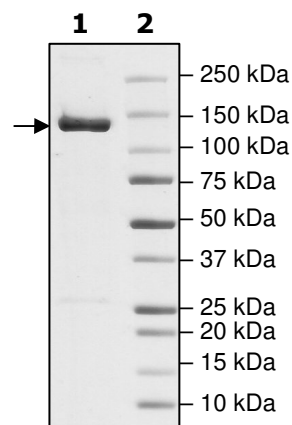
## Quality Assurance

### 4-20% SDS-PAGE Coomassie staining

**Lane 1:**  
2.6 µg APAF1

**Lane 2:**  
Protein Marker

**Purity:** ≥90%  
**MW:** 143 kDa



OUR PRODUCTS ARE FOR RESEARCH USE ONLY. NOT FOR DIAGNOSTIC OR THERAPEUTIC USE.

To place your order, please contact us by Phone **1.858.829.3082** Fax **1.858.481.8694**  
Or you can Email us at: [info@bpsbioscience.com](mailto:info@bpsbioscience.com)  
Please visit our website at: [www.bpsbioscience.com](http://www.bpsbioscience.com)



6044 Cornerstone Court West, Suite E  
San Diego, CA 92121  
Tel: 1.858.829.3082  
Fax: 1.858.481.8694  
Email: [info@bpsbioscience.com](mailto:info@bpsbioscience.com)

**Sequence:**

MHHHHHHHDYKDDDDKDAKARNCLLQHREALEKDIKTSYIMDHMISDGFLTISEEEKVRN  
EPTQQQRAAMLKMLKKDND SYVSFY NALLHEGYKDLAALLHDGIPVVSSSSVRTVLC  
EGGVPQRPVVFVTRK KLVNAIQQKLSKLGEPGWVTIHGMAGCGKSVLAAEAVRDHSL  
LEGCFPGGVHWSVVGKQDKSGLLMKLNLCRLDQDESFSQRLPLNIEEAKDRLRILM  
LRKHPRSL LILDDVWDSWVLKAFDSQCQILLTTRDKSVTDSVMGPKYVVPVSSLGKEK  
GLEILSLFVNMMKADLPEQAHSIIKECKGSPLVVS LIGALLRDFPNRWEY YLKQLQNKQF  
KRIRKSSSYDYEALDEAMSISVEMLREDIKDY YTDLSILQKDVKVPTK VLCILWDMETEE  
VEDILQEFVNKSL LFCDRNGK SFRYYLHDLQVDFLTEKNCSQLQDLHKKIITQFQRYHQP  
HTLSPDQEDCMY WYNFLAYHMASAKMHKELCALMFSLDWIKAKTEL VGPALHIHEFVE  
YRHILDEKDCAVSENFQEFSLNGHLLGRQPPFNIVQLGLCEPETSEVYQQAKLQAKQE  
VDNGMLYLEWINKKNITNLSRLVVRPHTDAVYHACFSEDGQRIASCGADKTLQVFAET  
GEKLEIKAHEDEV LCCAFSTDDRFIATCSVDKVKIWN SMTGELVHTYDEHSEQVNCC  
HFTNSSHLLL ATGSSDCFLKLWDLNQKECRNTMFGHTNSVNHCRFSPDDKLLASCSA  
DGT LKLWDATSANERKSINVKQFFLNLEDPQEDMEVIVKCCSWSADGARIMVAAKNKIF  
LFDIHTSGLLGEIHTGHHSTIQYCDFSPQNHLAVVALSQYCVELWNTDSRSKVADCRGH  
LSWVHGVMFSPDGSSFLTSSDQ TIRLWETKKVCKNSAVMLKQEV DVVFQENEVMVL  
AVDHIRRLQLINGRTGQIDYLTEAQVSCCCLSPHLQYIAFGDENG AIEILELVN NRIFQSR  
FQHKKTVWHIQFTADEKTLISSDDAEIQVWNWQLDKCIFLRGHQETVKDFRLLKNSRL  
LSWSFDGTVKVWNIITGNKEKDFVCHQGT VLSCDISHDATKFSSTSADKTAKIWSFDLLL  
PLHEL RGHNGCVRCSAFVSVDSTLLATGDDNGEIRIWNVSN GELLHLCAPLSEEGAATH  
GGWVTDLCFSPDGKMLISAGGYIKWWNVVTGESSQTFYTNGTNLKKIHVSPDFKTYVT  
VDNLGILYILQTLE

OUR PRODUCTS ARE FOR RESEARCH USE ONLY. NOT FOR DIAGNOSTIC OR THERAPEUTIC USE.

To place your order, please contact us by Phone **1.858.829.3082** Fax **1.858.481.8694**  
Or you can Email us at: [info@bpsbioscience.com](mailto:info@bpsbioscience.com)  
Please visit our website at: [www.bpsbioscience.com](http://www.bpsbioscience.com)