

Data Sheet

MME

Human, recombinant, N-terminal His-tag

Catalog #: 80212

Lot#: 131001 **Conc.:** 0.19 mg/ml

Formulated in: 40 mM Tris-HCl pH 8.0,
110 mM NaCl, 2.2 mM KCl, 200 mM
imidazole, and 20% glycerol.

Stability: >6 months at -80°C. *Avoid
freeze/thaw cycles.*

References:

1. Zhou, L., *et al.*, *Am J Transl Res.*
2013 Sep 25;**5(6)**:608-21.
2. Pereira, N.L., *et al.* *J. Mol. Cell
Cardiol.* 2010 Nov;**49(5)**:864-74.

Description:

Human membrane metallo-
endopeptidase (MME), also known as
CALLA, neutral endopeptidase (NEP),
CD10, and Nephilysin (GenBank
Accession No. NM_000902.3), a.a. 52-
750(end), with N-terminal His-tag, MW=
81kDa, expressed in HEK293 cell
expression system.

Application:

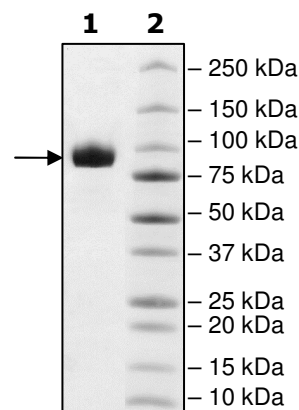
Useful for the study of enzyme kinetics,
screening inhibitors, and selectivity
profiling.

Quality Assurance

4-20% SDS-PAGE Coomassie staining

Lane 1:
3 µg MME
Lane 2:
Protein Marker

MW: 81 kDa
Purity: ≥90%



OUR PRODUCTS ARE FOR RESEARCH USE ONLY. NOT FOR DIAGNOSTIC OR THERAPEUTIC USE.

To place your order, please contact us by Phone **1.858.829.3082** Fax **1.858.481.8694**

Or you can Email us at: info@bpsbioscience.com

Please visit our website at: www.bpsbioscience.com



6044 Cornerstone Court West, Suite E
San Diego, CA 92121
Tel: 1.858.829.3082
Fax: 1.858.481.8694
Email: info@bpsbioscience.com

Sequence:

HHHHHHYDDGICKSSDCIKSAARLIQNMDATTEPCTDFFKYACGGWLKRVIPETSSRY
GNFDILRDELEVVLKDVLEPKTEDIVAVQKAKALYRSCINESAIDSRGGEPLLKLLPDIY
GWPVATENWEQKYGASWTAEKAIQNLNSKYGKKVLINLFGTDDKNSVNHVIHIDQPR
LGLPSRDYYECTGIYKEACTAYVDFMISVARLIRQEERLPIDENQLALEMNKVMLEKEI
ANATAKPEDRNDPMLLYNKMTLAQIQNNFSLEINGKPFWSLNFNFTNEIMSTVNSITNEED
VVVYAPEYLTKLKPILTKYSARDLQNLMSWRFIMDLVSSLSRPTYKESRNAFRKALYGTT
SETATWRRRCANYVNGNMENAVGRLYEAAFAGESKHVVEDLIAQIREVFIQTLDDLTLW
MDAETKKRAEEKALAIKERIGYPDDIVSNDNKLNNEYLELNYKEDEYFENIIQNLKFSQS
KQLKKLREKVDKDEWISGAAVVNAFYSSGRNQIVFPAGILQPPFFSAQQSNSLNYGGIG
MVGHEITHGFDDNGRNFNKGDLVDWWTQQSASNFKESQCMVYQYGNFSWDLAG
GQHLNGINTLGENIADNGGLGQAYRAYQNYIKKNGEEKLLPGLDLNHNKQLFFLNFAQV
WCGTYRPEYAVNSIKTDVHSPGNFRIIGTLQNSAEFSEAFHCRKNSYMNPEKKCRVW

OUR PRODUCTS ARE FOR RESEARCH USE ONLY. NOT FOR DIAGNOSTIC OR THERAPEUTIC USE.
To place your order, please contact us by Phone **1.858.829.3082** Fax **1.858.481.8694**
Or you can Email us at: info@bpsbioscience.com
Please visit our website at: www.bpsbioscience.com