



6042 Cornerstone Court West, Suite B
San Diego, CA 92121
Tel: 1.858.202.1401
Fax: 1.858.481.8694
Email: info@bpsbioscience.com

Data Sheet

CBL, GST-Tag

Human, Recombinant, N-terminal GST-Tag

Catalog #: 100370

Lot #: 190430

Conc.: 0.40 mg/ml

Formulated in: 40 mM Tris-HCl, pH 8.0, 110 mM NaCl, 2.2 mM KCl, 3 mM DTT, 0.04% Tween20, 20% glycerol, 16 mM glutathione, 3 mM DTT.

Stability: At least 6 months at -80°C . Avoid freeze/thaw cycles.

References:

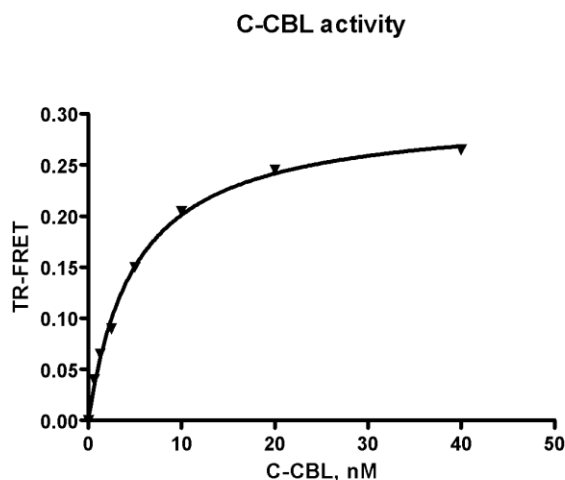
1. Keane, M.M., *Oncogene*, 1999 June; **18**: 3365-3375.
2. Griffiths, E.K., *Molec. and Cellular Bio.* 2003; Oct. **23(21)**:7708-7718

Description: Human CBL, also known as CBL-2, Cbl Proto-Oncogene, Signal Transduction Protein CBL, and Cbl Proto-Oncogene, E3 Ubiquitin Protein Ligase, Genbank Accession No. NM_005188, a.a. 49-434 with N-terminal GST-tag, expressed in an E. coli expression system. MW = 71 kDa.

Assay Conditions: 10 μL of reaction mixture contains 50 mM Tris, pH 7.4, 5 mM MgCl_2 , 0.01% Tween, 0.2 μM Ub[Biotin], 50 nM Ube1, 1 mM ATP, 2 μM of UBCH5b, and various amount of CBL-B and C-CBL. The reaction was initiated with the addition of ATP, and incubated at 30°C for 3 hours. Tb labeled anti-GST antibody donor and xl665 labeled acceptor was added and incubated at room temperature for one hour.

Applications: Useful for the study of enzyme kinetics and regulation, to dephosphorylate target substrates and for screening inhibitors.

Quality Assurance

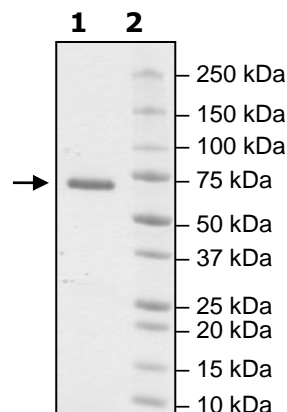


4-20% SDS-PAGE Coomassie staining

Lane 1:
CBL
Lane 2:
Protein Marker

Purity: $\geq 90\%$

MW: 71 kDa



OUR PRODUCTS ARE FOR RESEARCH USE ONLY. NOT FOR DIAGNOSTIC OR THERAPEUTIC USE.

To place your order, please contact us by Phone **1.858.202.1401** Fax **1.858.481.8694**

Or you can Email us at: info@bpsbioscience.com

Please visit our website at: www.bpsbioscience.com