

## Data Sheet

### **BMX, Active**

human, recombinant, N-terminal GST tag

**Catalog #:** 40402

**Lot #:** 140709-5      **Conc.:** 0.7 mg/ml

**Formulated in:** 50 mM Tris-HCl, pH 7.5, 150 mM NaCl, 0.25 mM DTT, 0.1 mM EGTA, 0.1 mM EDTA, 0.1 mM PMSF, 25% glycerol

**Stability:** >6 months at  $-80^{\circ}\text{C}$ . Avoid freeze/thaw cycles. Storing diluted enzyme is not recommended, if necessary, use carrier protein (BSA 0.1 – 0.5%).

#### **References:**

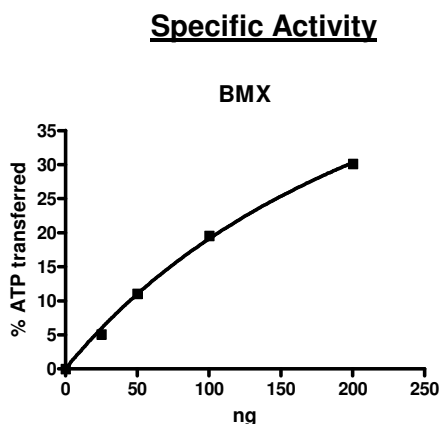
1. Tamagnone, L. *et al. Oncogene*. 1994 Dec;9(12):3683-8.
2. Saharinen, P. *et al. Blood*. 1997 Dec 1;90(11):4341-53

**Description:** Recombinant full-length human cytoplasmic tyrosine-protein kinase BMX (BMX), also known as bone marrow tyrosine kinase gene in chromosome X protein, epithelial and endothelial tyrosine kinase, ETK, and NTK38 was expressed by baculovirus in Sf9 insect cells using an N-terminal GST tag, a.a. 1-675 (end). The gene accession number is NM\_001721 (variant 2).

**Specific Activity:** 43 pmol/min/ $\mu\text{g}$   
**Assay Conditions:** Assay was done in Kinase buffer containing 0.2 mM DTT using Poly-(Tyr,Glu) substrate (0.2 mg/ml) and 20 mM ATP. Reaction was done at  $30^{\circ}\text{C}$  for 45 min. Amount of ATP transferred was measured using Kinase-Glo reagent (Promega)

**Application:** Useful for the study of enzyme kinetics, screening inhibitors, and selectivity profiling.

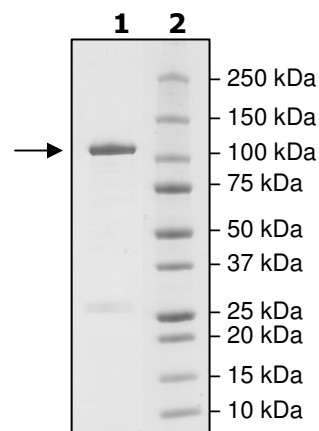
### **Quality Assurance**



**4-20% SDS-PAGE**  
**Coomassie staining**

**Lane 1:**  
2  $\mu\text{g}$  BMX  
**Lane 2:**  
Protein Marker

**MW:** 110 kDa  
**Purity:**  $\geq 80\%$



OUR PRODUCTS ARE FOR RESEARCH USE ONLY. NOT FOR DIAGNOSTIC OR THERAPEUTIC USE.

To place your order, please contact us by Phone **1.858.829.3082** Fax **1.858.481.8694**

Or you can Email us at: [info@bpsbioscience.com](mailto:info@bpsbioscience.com)

Please visit our website at: [www.bpsbioscience.com](http://www.bpsbioscience.com)