

## Data Sheet

### BRAF, GST-tag

Human, Recombinant, N-terminal GST-tag  
**Catalog #:** 40065  
**Lot #:** 190418-G1      **Conc.:** 0.47 mg/ml

**Formulated in:** 40 mM Tris-HCl, pH 8.0,  
 110 mM NaCl, 2.2 mM KCl, 0.04%  
 Tween-20, 3 mM DTT and 20% Glycerol.

**Stability:** At least 6 months at  $-80^{\circ}\text{C}$ .  
 Avoid freeze/thaw cycles.

**References:**

1. Sithanandam G., *et al.* (1990). *Oncogene*. **5(12)**: 1775–1780.
2. Shepherd C., *et al.* (2010). *Curr. Oncol. Rep.* **12(3)**:146-152.

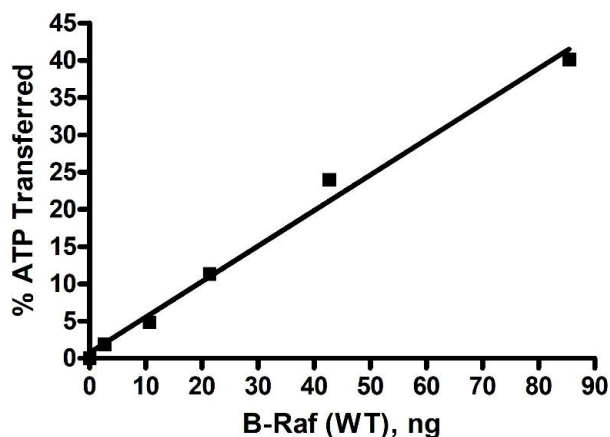
**Description:** Human BRAF, also known as B-Raf Proto-Oncogene and RAFB1, GenBank Accession No. NM\_004333, a.a. 417-766(end) with N-terminal GST-tag, expressed in Sf9 cells using a Baculovirus expression system. MW=66 kDa.

**Specific Activity:**  $\geq 112$  pmole/min/ $\mu\text{g}$ .  
**Assay Conditions:** Assay was done in Kinase buffer containing 1 mM DTT, 0.1 mg/ml Raf substrate (Mek1 cat #40075 lot 190508-3), and 10  $\mu\text{M}$  ATP. Reaction was done at  $30^{\circ}\text{C}$  for 45 min. Amount of ATP transferred was calculated using Kinase-Glo reagent (Promega).

**Application:**  
 Useful for the study of enzyme kinetics, screening inhibitors, and selectivity profiling.

## Quality Assurance

### Specific Activity

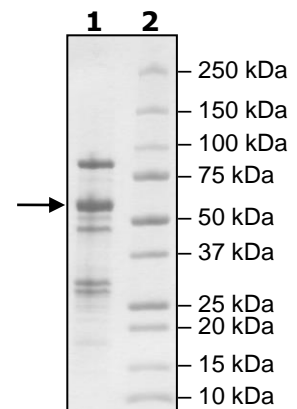


### 4-20% SDS-PAGE Coomassie staining

**Lane 1:**  
2  $\mu\text{g}$  BRAF  
**Lane 2:**  
Protein Marker

**MW:** 66 kDa

**Purity:**  $\geq 35\%$



OUR PRODUCTS ARE FOR RESEARCH USE ONLY. NOT FOR DIAGNOSTIC OR THERAPEUTIC USE.

To place your order, please contact us by Phone **1.858.202.1401** Fax **1.858.481.8694**  
 Or you can Email us at: [info@bpsbioscience.com](mailto:info@bpsbioscience.com)  
 Please visit our website at: [www.bpsbioscience.com](http://www.bpsbioscience.com)