

Data Sheet

LDLR, FLAG-Tag, Eu-Labeled

Human, Recombinant, C-terminal
 FLAG-Tag, Eu-Labeled

Catalog #: 79079

Lot #: 190921

Conc.: 0.28 mg/ml

Formulated in: 8 mM Phosphate, pH 7.4,
 110 mM NaCl, 2.2 mM KCl, and 20%
 glycerol (PBS + 20% glycerol).

Stability: At least 6 months at -80°C .
 Avoid freeze thaw cycles.

References:

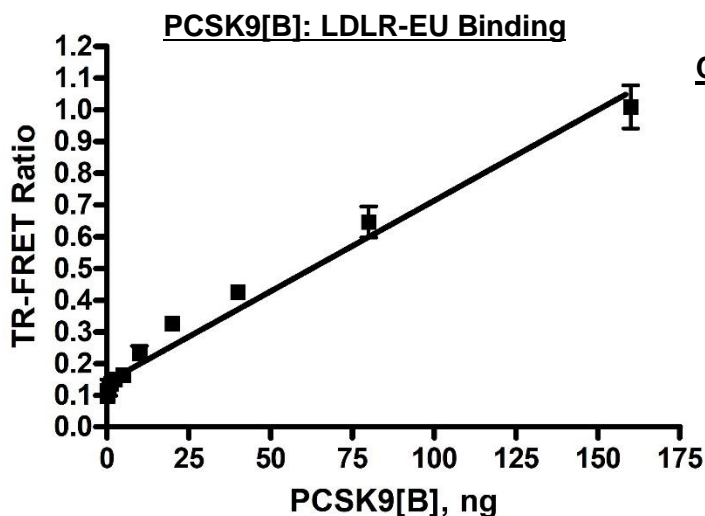
- Holla, L., *et al.*, *BMC Cell Biol.* 2007 Mar 1;**8**:9.
- Qian, YW., *et al.*, *J Lipid Res.* 2007 Jul;**48**(7):1488-98.

Description: Human LDLR, also known as low density lipoprotein receptor FH, FHC, and LDLCQ2, GenBank Accession No. NM_000527, a.a. 22-788, with C-terminal FLAG-tag and Eu-labeled., expressed in a HEK293 cell expression system. MW=86 kDa.

Assay Conditions: Assay run according to PCSK9-LDLR TR-FRET assay kit #72010. Enzyme mixture contained 400-fold diluted Streptavidin-XL 665, 2.5 ng LDLR-Eu, 50 mM MES pH 6.0, 50 mM NaCl, 0.2 mM CaCl_2 , 0.05% Tween-20, 0.1% BSA, and various amounts PCSK9, Biotinylated. TR-FRET intensity read at excitation 320 nm and emission wavelengths of 620 nm (± 10 nm) and 665 nm (± 10 nm) after 2 hour incubation.

Applications: Useful for studying protein binding and screening small molecules for drug discovery.

Quality Assurance

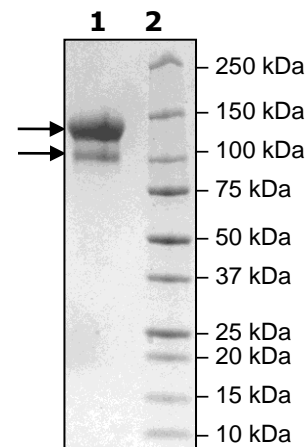


**4-20% SDS-PAGE
 Coomassie staining**

Lane 1:
 4 μg LDLR
Lane 2:
 Protein Marker

MW: 86 kDa

Purity: $\geq 90\%$



OUR PRODUCTS ARE FOR RESEARCH USE ONLY. NOT FOR DIAGNOSTIC OR THERAPEUTIC USE.

To place your order, please contact us by Phone **1.858.202.1401** Fax **1.858.481.8694**

Or you can Email us at: info@bpsbioscience.com

Please visit our website at: www.bpsbioscience.com