

Data Sheet

PLA2G7

Human, recombinant, C-terminal His tag
Catalog #: 60091
 Lot #: 120116 Conc.: 0.25 mg/ml

Formulated in: 40 mM Tris-HCl, pH 8.0,
 110 mM NaCl, 2.2 mM KCl, 200 mM
 Imidazole, 20% Glycerol.

Stability: >6 months at -80°C

References:

1. Ferguson JF., et al., J Am Coll Cardiol. 2012; **59(8)**:764-72.
2. Song K., et al., Pharmacogenomics J.(2011).

Description: Human PLA2G7, (GenBank Accession No. NM_005084), (a.a. 22-441(end)), with C-terminal His tag, MW=49.2 kDa, expressed in a mammalian cell expression system.

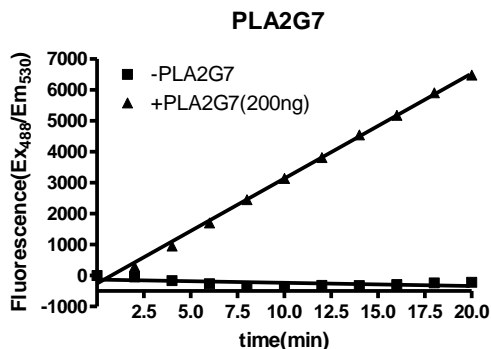
Assay Conditions: Enzyme reaction is conducted using liposomally incorporated Red/Green BODIPY PC-A2 (5 µM, Invitrogen) as a substrate in a reaction buffer (50 mM Tris, pH 8.8, 100 mM NaCl, 1 mM CaCl₂). Reaction progress was monitored at ex₄₈₀/em₅₃₃ continuously at room temperature.

Application:

Suitable for binding studies, as an immunogen, and as a standard for Western blotting.

Quality Assurance

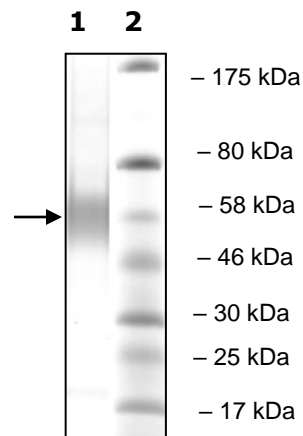
Specific Activity



10% SDS-PAGE
Coomassie
staining

Lane 1:
 5 µg PLA2G7
Lane 2:
 Protein Marker
 BioLabs (#P7708L)

MW: 49.2 kDa
Purity: ≥91%



OUR PRODUCTS ARE FOR RESEARCH USE ONLY. NOT FOR DIAGNOSTIC OR THERAPEUTIC USE.

To place your order, please contact us by Phone **1.858.829.3082** Fax **1.858.481.8694**
 Or you can Email us at: info@bpsbioscience.com
 Please visit our website at: www.bpsbioscience.com