



6042 Cornerstone Court West, Suite B
San Diego, CA 92121
Tel: 1.858.829.3082
Fax: 1.858.481.8694
Email: info@bpsbioscience.com

Data Sheet

CERK, FLAG-Tag (Rat)

Rat, Recombinant, C-terminal FLAG-tag

Catalog #: 79414

Lot#: 180301-1

Conc.: 0.26 mg/ml

Formulated in: 40 mM Tris-HCl, pH 8.0, 110 mM NaCl, 2.2 mM KCl, 20% glycerol and 100ug/ml flag peptide

Stability: At least 6 months at -80°C . Avoid freeze/thaw cycles. Protein may be diluted to $\geq 100 \mu\text{g/ml}$ in PBS + glycerol and stored at -80°C .

References:

1. Sugiura, M. *et al.*, *JBC*. **277**, 23294-23300 (2002)
2. Majjalieh, S.M., *et al.*, *JBC*. **264**, 14354-14360 (1989)

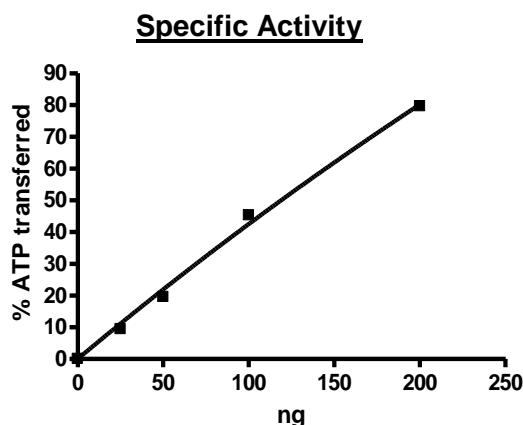
Description: Rat CERK, also known as ceramide kinase, GenBank Accession No. NM_00113486, 1-531 (end) with C-terminal Flag tag, MW= 61 kDa, expressed in baculovirus expression system in Sf9 insect cells.

Specific Activity: ≥ 20 pmole/min/ μg

Assay conditions: CERK activity was measured at 37°C for 25 min in a buffer (20 mM HEPES pH7.2, 80 mM KCl, 3 mM CaCl_2 , 10 mM MgCl_2 , 2 mM DTT, 5 μM ATP) using a μ -Octylglucoside mixed micellar assay with 100 μM Ceramide (BPS# 40618). ATP reduction was detected using Kinase-Glo[®] Luminescent Kinase Assay Platform (Promega, Madison, WI).

Application: Useful for the study of enzyme kinetics, screening inhibitors, and selectivity profiling.

Quality Assurance



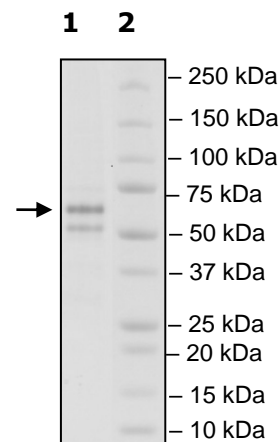
4-20% SDS-PAGE Coomassie staining

Lane 1:
Rat CERK

Lane 2:
Protein Marker

Purity: 65%

MW: 61 kDa



OUR PRODUCTS ARE FOR RESEARCH USE ONLY. NOT FOR DIAGNOSTIC OR THERAPEUTIC USE.

To place your order, please contact us by Phone **1.858.829.3082** Fax **1.858.481.8694**

Or you can Email us at: info@bpsbioscience.com

Please visit our website at: www.bpsbioscience.com