

Data Sheet

PDE6C, GST-tag

Human, Recombinant, N-terminal GST-tag
Catalog #: 60062

Lot #: 171023-A **Conc.:** 0.18 mg/ml

Formulated in: 40 mM Tris-HCl, pH 8.0,
 110 mM NaCl, 2.2 mM KCL, 3 mM DTT,
 20% Glycerol and 2 mM Glutathione.

Stability: At least 6 months at -80°C . Avoid
 freeze/thaw cycles. Storing diluted enzyme
 is not recommended, if necessary use
 carrier protein (BSA 0.1 – 0.5%).

References:

1. Martinez S.E. *et al.*, *J Biol Chem.*
 2008 Sep 19; **283(38)**:25913-9.
2. Stearns G. *et al.*, *J Neurosci.* 2007
 Dec 12; **27(50)**:13866-74.

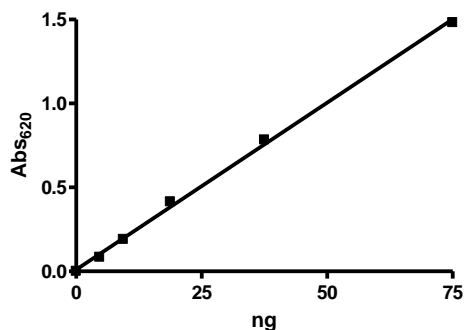
Description: Human PDE6C, GenBank
 Accession No. NM_006204, full length,
 with N-terminal GST tag, MW = 126 kDa,
 expressed in a Baculovirus infected Sf9
 cell expression system.

Specific Activity: $\geq 3,000$ pmole/min/ μg
 One unit is defined as the amount of
 enzyme that will convert 1 pmole of 3', 5'-
 cGMP to 5'-GMP per min at 37°C . Assay
 condition: 10 mM Tris-HCl, pH 7.4, 10 mM
 MgCl₂, 0.1 mg/ml BSA, 0.05% Tween-20,
 200 μM cGMP, and serial dilutions of
 PDE6C at 37°C for 20 min. Quantified by 5'
 nucleotidase cleaving the 5'-GMP product
 and releasing the phosphate group which
 is detected by Malachite Green Reagent.

Application: Useful for the study of
 enzyme kinetics, screening inhibitors, and
 selectivity profiling.

Quality Assurance

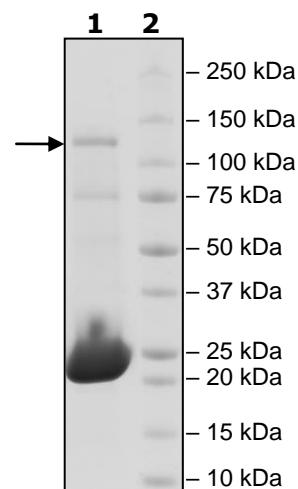
Specific Activity



4-20% SDS-PAGE Coomassie staining

Lane 1:
 2 μg PDE6C
Lane 2:
 Protein Marker

MW: 126 kDa
Purity: $\geq 5\%$



OUR PRODUCTS ARE FOR RESEARCH USE ONLY. NOT FOR DIAGNOSTIC OR THERAPEUTIC USE.

To place your order, please contact us by Phone **1.858.829.3082** Fax **1.858.481.8694**

Or you can Email us at: info@bpsbioscience.com

Please visit our website at: www.bpsbioscience.com