

Data Sheet

ATP Citrate Lyase, GST-tag

Human, recombinant, N-terminal GST tag

Catalog #: 50255

Lot#: 161107G3 **Conc.:** 0.52 mg/ml

Formulated in: 45 mM Tris-HCl, pH 8.0, 124 mM NaCl, 2.4 mM KCl, 18 mM glutathione, 10% glycerol, and 3 mM DTT.

Stability: At least 6 months at -80°C . Avoid freeze/thaw cycles. Storing diluted enzyme is not recommended, if necessary, use carrier protein (BSA 0.1 – 0.5%).

References:

1. Migita T. et al., Cancer Res. 68 (20), 8547-8554 (2008).
2. Ramakrishna S. et al., Biochemistry 29 (33), 7617-7624 (1990).

Description:

Human ATP citrate lyase (ACLY) (GenBank Accession No. NM_001096), full length, with N-terminal GST tag, MW=147 kDa, expressed in baculovirus expression system.

Specific Activity: >300 pmole/min/ μg .

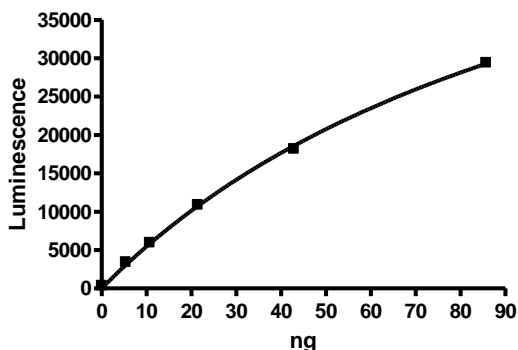
Assay conditions: 40 mM Tris (pH 8.0), 10 mM MgCl₂, 2 mM DTT, 2 mM Potassium Citrate, 0.1 mM CoA and 100 μM ATP. Reaction was done at 30 oC for 45 min, and activity was measured using ADP-Glo reagents (Promega).

Application:

Useful for the study of enzyme kinetics, screening inhibitors, and selectivity profiling.

Quality Assurance

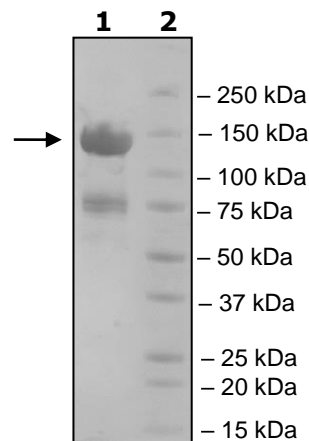
Specific Activity



4-20% SDS-PAGE
Coomassie staining

Lane 1:
11.2 μg ACLY
Lane 2:
Protein Marker

MW: 147 kDa
Purity: $\geq 68\%$



OUR PRODUCTS ARE FOR RESEARCH USE ONLY. NOT FOR DIAGNOSTIC OR THERAPEUTIC USE.

To place your order, please contact us by Phone **1.858.829.3082** Fax **1.858.481.8694**

Or you can Email us at: info@bpsbioscience.com

Please visit our website at: www.bpsbioscience.com