

Data Sheet

PADI4, FLAG-tag

Human, recombinant, C-terminal FLAG-tag

Catalog #: 50154

Lot #: 141104

Conc.: 0.38 mg/ml

Formulated in: 40 mM Tris-HCl, pH 8.0, 110 mM NaCl, 2.2 mM KCl, 3 mM DTT, 80 µg/mL FLAG peptide and 20% glycerol

Stability: At least 6 months at -80°C . Avoid freeze/thaw cycles. Storing diluted enzyme is not recommended, if necessary, use carrier protein (BSA 0.1 – 0.5%).

References:

1. Kanno T, *et al.* (2000). *J. Invest. Dermatol.* **115** (5): 813–23.
2. Nachat R, *et al.* (2005). *J. Invest. Dermatol.* **124** (2): 384–93.
3. Wang Y, *et al.* (2004). *Science* **306** (5694): 279–83.

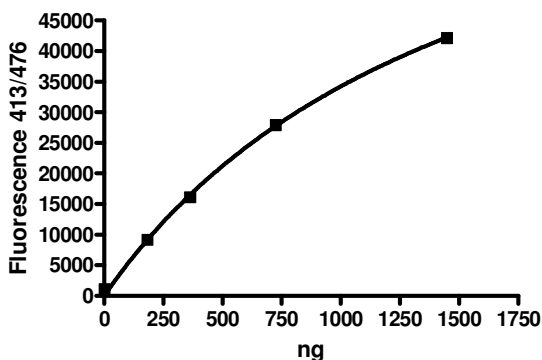
Description: Human PADI4 (GenBank Accession No. NM_012387), 1-663(end), with C-terminal FLAG-tag, MW= 75 kDa, expressed in a Baculovirus infected Sf9 cell expression system.

Specific Activity: 100 pmole/min/µg
 Assay Conditions: Enzyme reaction was done in a buffer (50 mM Tris, pH 7.4, 50 mM NaCl, 10 mM CaCl_2 , and 2 mM DTT) containing PADI4 and 10 mM BAEE as a substrate for 25 min at 37°C . Amount of ammonia produced was measured and used for specific activity calculation.

Application: Useful for the study of enzyme kinetics, screening inhibitors, and selectivity profiling.

Quality Assurance

Specific Activity

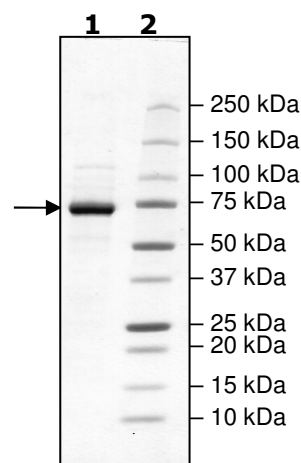


4-20% SDS-PAGE Coomassie staining

Lane 1:
2 µg PADI-4

Lane 2:
Protein Marker

MW: 75 kDa
Purity: $\geq 90\%$



OUR PRODUCTS ARE FOR RESEARCH USE ONLY. NOT FOR DIAGNOSTIC OR THERAPEUTIC USE.

To place your order, please contact us by Phone **1.858.829.3082** Fax **1.858.481.8694**

Or you can Email us at: info@bpsbioscience.com

Please visit our website at: www.bpsbioscience.com